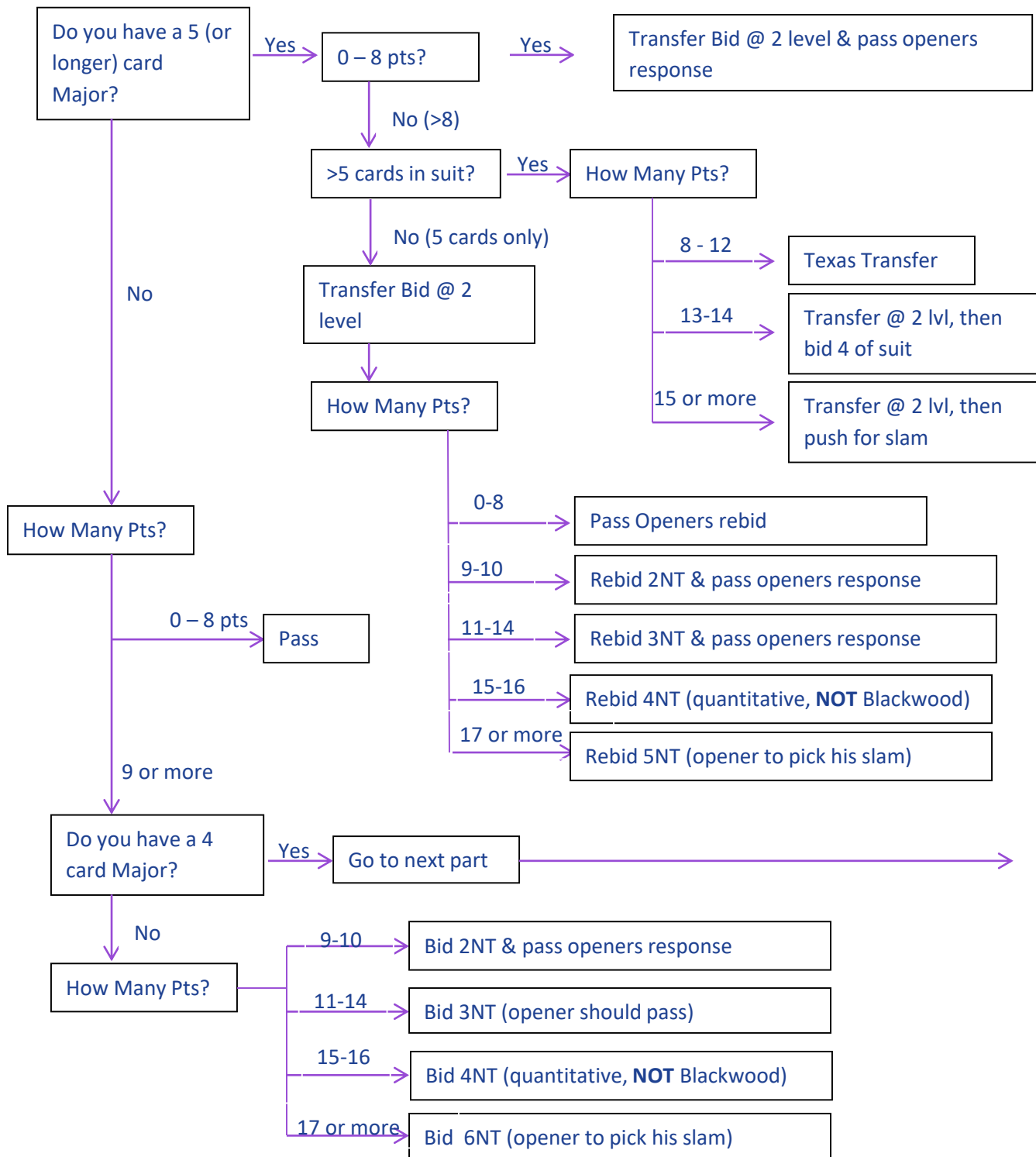
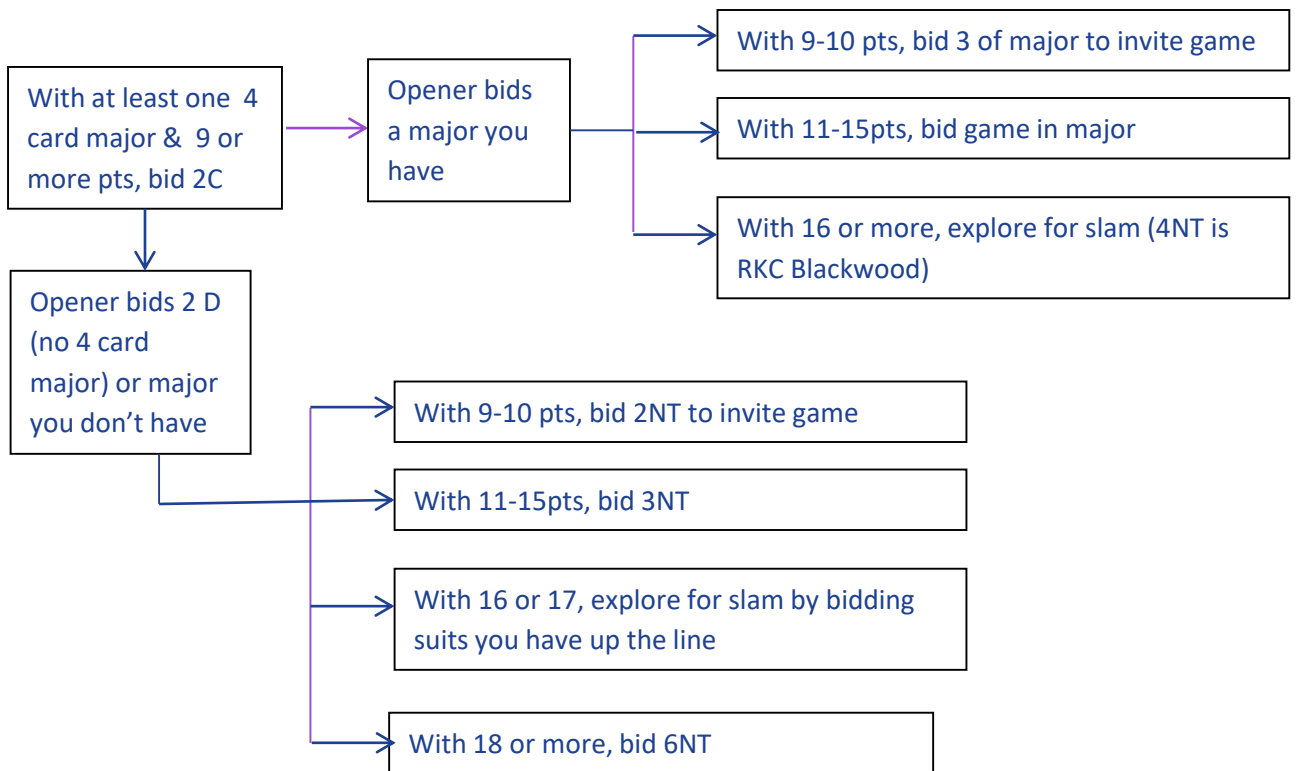


Responding to Partners Opening NT Bid

An opening 1NT (or 2NT) bid is very tightly defined, so you as the responder know more about the combined partnership assets than does opener. Your primary responsibility as responder is to set the level and strain of the final contract. In some cases you can ask opener a question and allow them to make the final decision, but it is up to you to ask the question. Remember 26 pts should produce game!

The following is a decision tree for responding to 1NT opening bids.





Responding to Partners Opening 2 NT Bid

The structure of your bids is the same, but now opener has 20 – 21, so the point requirements for your bids are reduced. If you have 6 or more, you want to be in game, and you invite with 5 points. You should still show 5 card or longer major suits with a transfer, and use Stayman if you have a 4 card major.

When partner Opens 2C and then rebids NT

2C followed by 2N shows a balanced 22 or 23. So now you want to be in game with 4 points, and invite with 3. Use transfers to show a 5 card or longer major, and bid 3C (Stayman with 4 or more points and a 4 card major. Note that on this sequence your 3C bid is always Stayman, since with a bad hand you just pass 2NT.